



Footprint Diagrams & Options

For Model 1A to Model 6F Dynamometers

New Stainless-steel model with
quick release wheel

Euroload Limited are very proud to introduce our newly designed RLM's with all the below added benefits and features.

1. Fully stainless-steel construction, Steel zinc passivated sheaves. Option for stainless sheaves.
2. IP68 down hole strain gauged load pin.
3. IP67 Euroload manufactured read switches.
4. Quick release main sheave wheels c/w lynch pins.
5. Installation on wire in under 1 minute.
6. No tools required to remove wheels and install wire.
7. Maintenance free sealed bearings.
8. Designed for quick/simple installation saving hours per operation.
9. Multiple sheaves available for each range of RLM fully calibrated to each sheave size.
10. Fitted with our well proven ELT24 telemetry electronics as standard. Data log multiple RLM's in one area via one PC.
11. Options for mounting include, prop shaft mount, chain mount (4 off eye bolts), foot mount. The Euroload RLM has also been designed to accept web slings for hanging the unit via its carry handles.

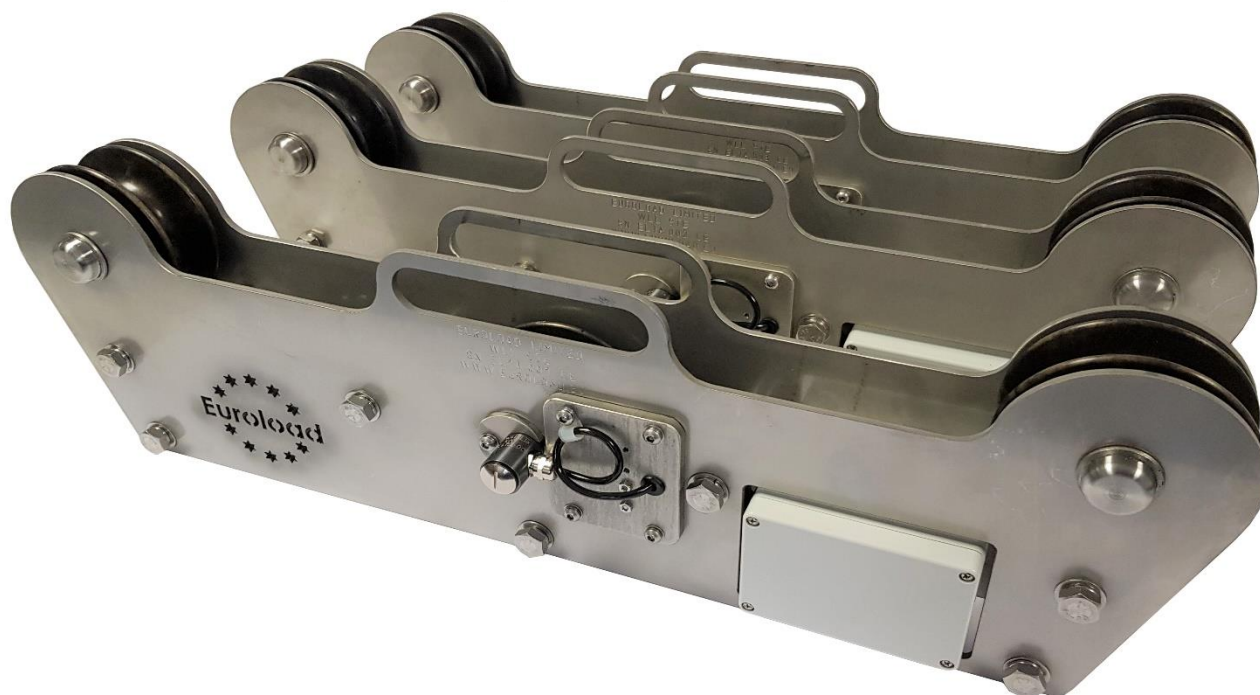


Table of Contents

Specifications4

Model 1A Dynamometer.....5

Cable and Display Options6

Model 2B Dynamometer.....7

Model 3C Dynamometer8

Model 4D Dynamometer9

Model 5E Dynamometer.....10

Model 6F Dynamometer..... 11

Mounting Information.....14

Contact Information 15



Specifications:

Running Line Monitor with Load pin **Mv/v** output

Safe Overload	200%
Ultimate breaking load	>500%
Output	1.5 Mv/v
Resistance input and output	700 ohm
Insulation value	>5Gohm
Operating range	-40 to +85 Deg C
Cable length	Customer specified
Ref Excitation recommended	5-10VDC
Accuracy	+/- 1% of F. S

Wiring for Mv/v load pin: RED= + excitation, Blue= – Excitation, Green= + signal, Yellow= - signal
Screen= Earth (OVDC)

Running Line Monitor with Load pin **4-20ma** output ICA4H fitted in pin head.

Safe Overload	200%
Ultimate breaking load	>500%
Output	4-20ma
Bridgeresistance input and output	700 ohm
Insulation value	>5Gohm
Operating range	-40 to +85 Deg C
Cable length	Customer specified
Supply voltage	13-28VDC
Max operating current	42ma
Zero Temp Stability	Max 0.0015 +/--%FR/degC
Span Temp Stability	Max 0.0052 +/--%FR/degC
Accuracy	+/- 1% of F.S

Wiring for 4-20 ma output: RED+ supply Blue= 0VDC, Green= + signal 4-20ma, Yellow= -signal (OVDC)
Screen= Earth

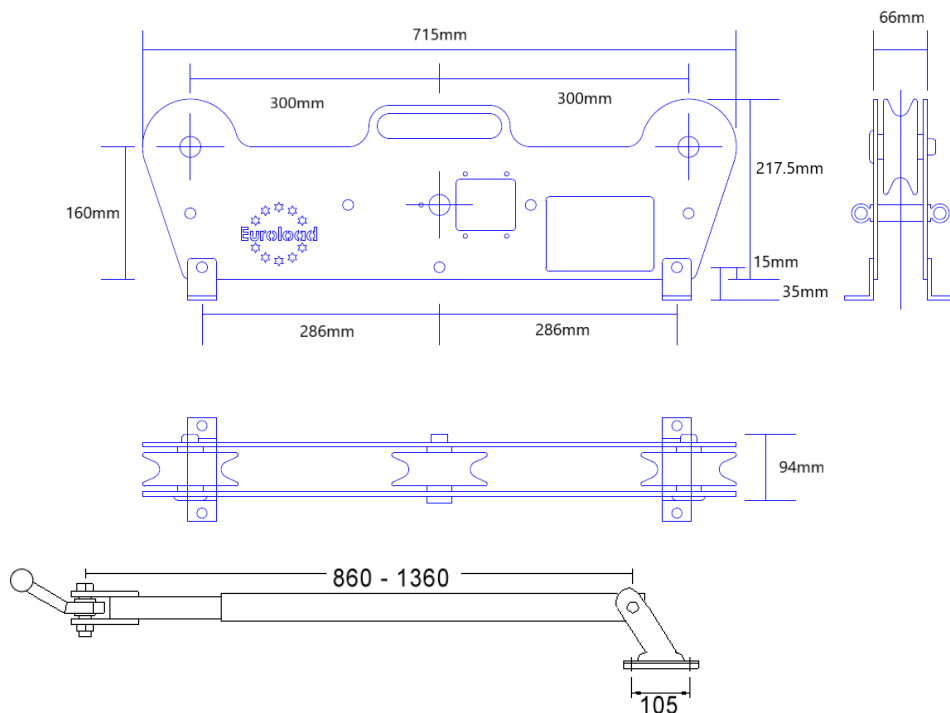
ELT24 Telemetry output

For ELT24 telemetry specifications and output/support modules, see datasheet ELT24 Made to Measure. This covers the full range of telemetry receivers available to work with this RLM.

We have simple receiver handsets, Log100 logging software, analogue input modules, digital input modules, gateways, alarms and many more.

Model 1 A Dynamometer

The Model 1 Dynamometer can measure up to **9** tons of cable tension. And can be fitted in many ways.



Sheave sizes 8mm, 10mm, 13mm, 16mm 19mm, 22mm, 24mm and 25mm

Note. You can buy 1 off RLM complete and 5 extra sets of wheels to cover all wire sizes. When changing wheels over you need to recalibrate the unit against the correct wire size.

Possible mounts

Standard foot mount

Prop shaft/Swivel Mount

Hook and Chain Mount

Options for cables;

Cables can be supplied in any length to suit your requirements; 10 meters of cable is supplied as standard.

Readout options include;

Mains driven Load and Payout:

EL-RLM-SS mains driven display showing load and payout. As standard for a single RLM but panels for multiple RLM's are available on request.

Telemetry options:

Full telemetry version now available for 2018. Remote datalogging via PC also available.

Hazardous area zone 2:

A hazardous area zone 2 RLM readout system is available. Heavy duty, detachable cable, mains driven safe area power supply.



EL-RLM-SS Heavy Duty Mains Driven Stainless steel panel showing load, pay out and speed.

Alarm relays, analogue output, RS 485 output as standard. IP66 overall protection. Datalogging package available.



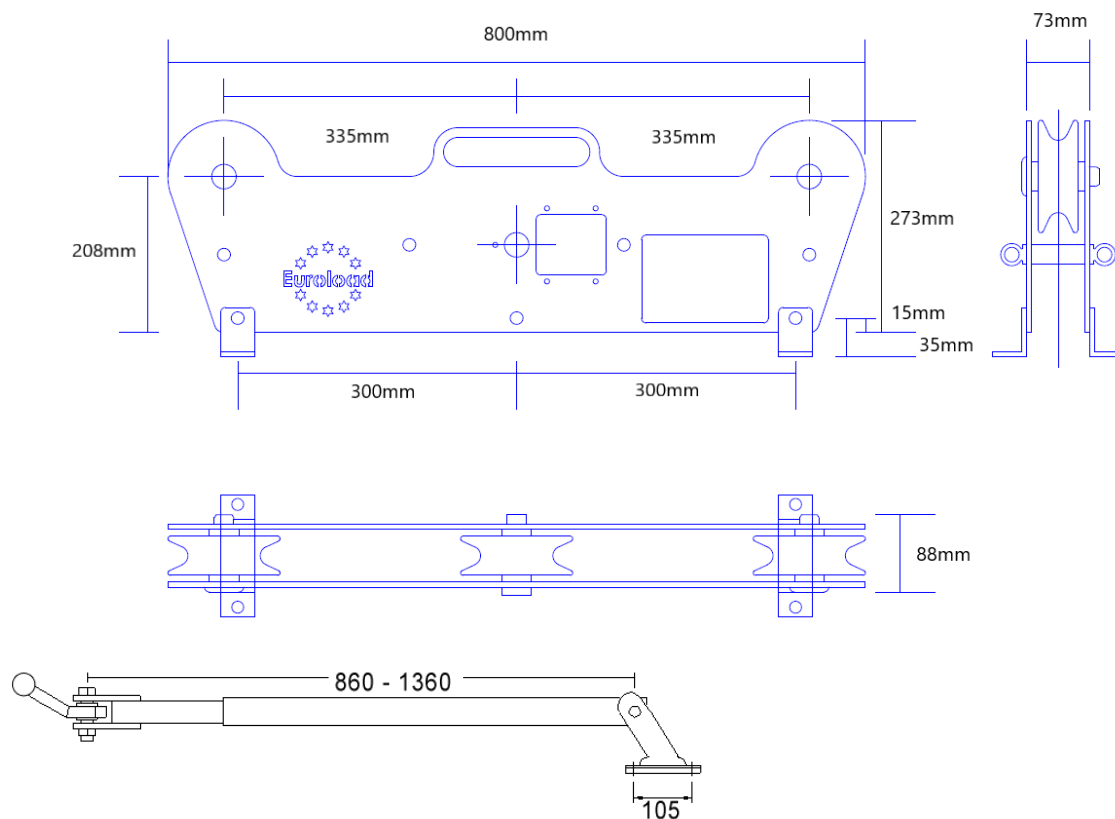
NEW 2019. Telemetry RLM c/w remote readout for reading load, payout and speed. Laptop c/w USB receiver available.



Zone 2. Hazardous area cable based RLM. Heavy duty stainless steel enclosure housing Beka zone 1 digital indicators. Load and payout. Safe area power supply.

Model 2B Dynamometer

The Model 2 Dynamometer can measure up to **25** tons of cable tension



Sheave sizes

22mm, 25mm, 28mm, and 30mm

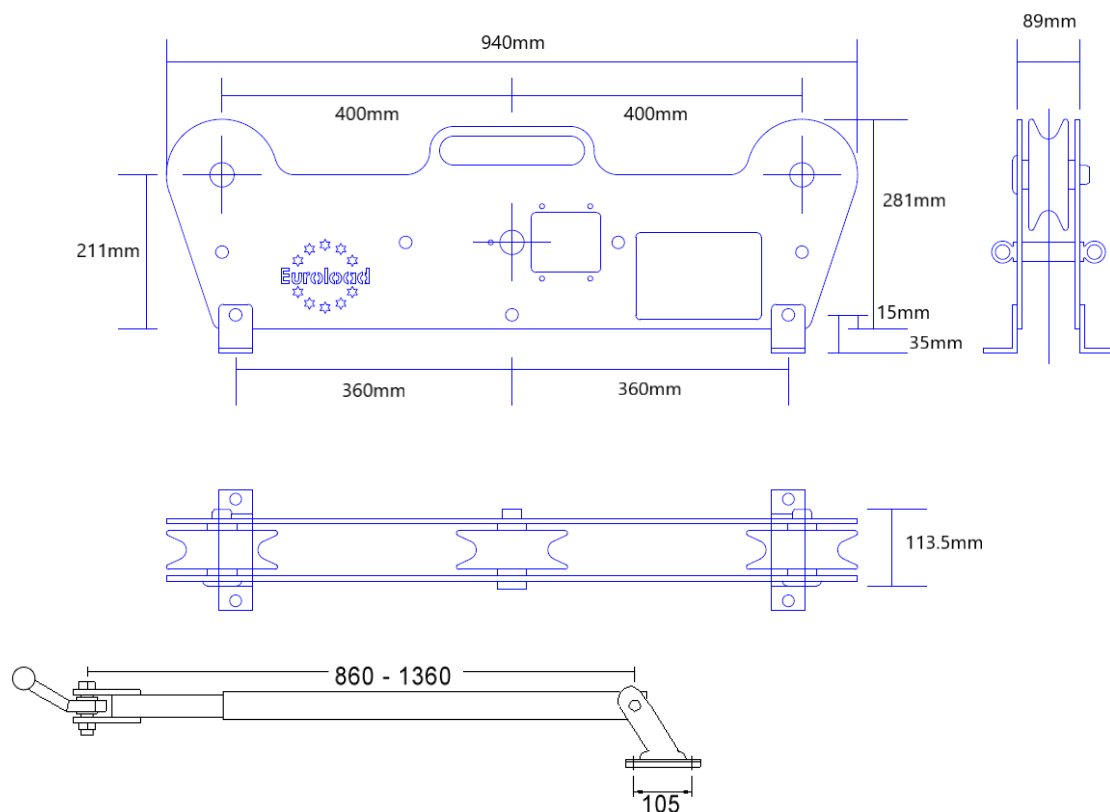
Note. You can buy 1 off RLM complete and 2 extra sets of wheels to cover all wire sizes. When changing wheels over you need to recalibrate the unit against the correct wire size.

Possible mounts

Standard foot mount
Prop shaft/Swivel Mount
Hook and Chain Mount

Model 3 Dynamometer

The Model 3 Dynamometer can measure up to **45** tons of cable tension



Sheave sizes

30mm, 32mm, 35mm, 38mm and 40mm

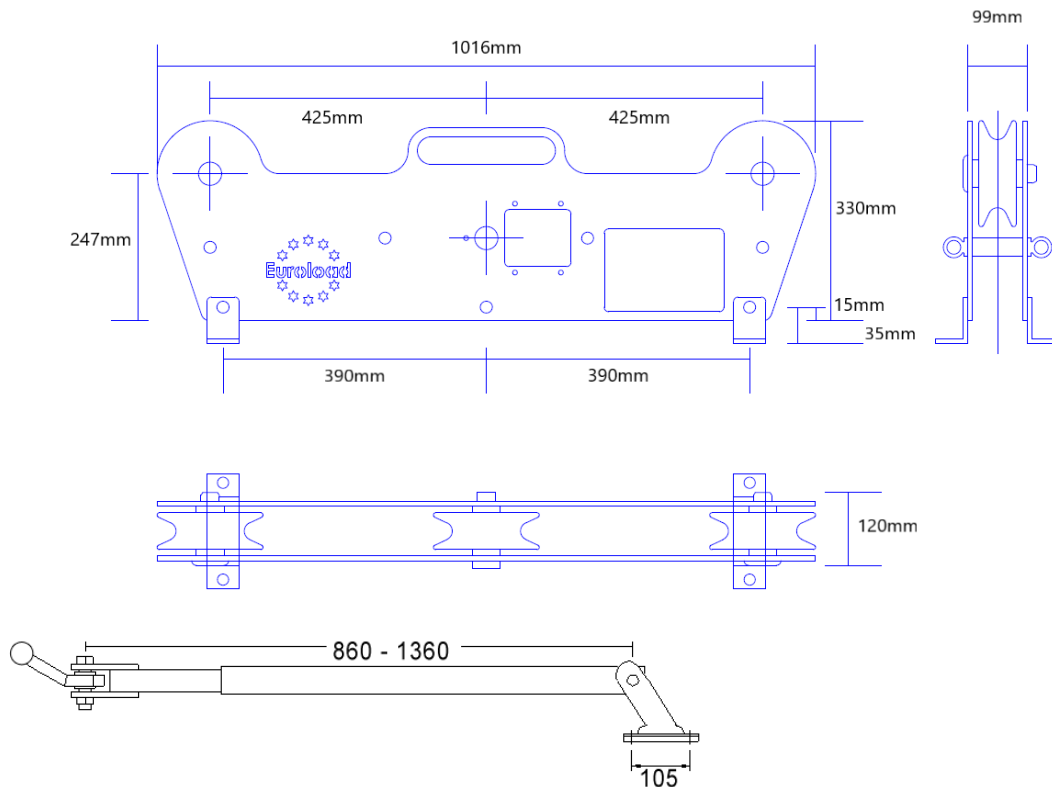
Note. You can buy 1 off RLM complete and 3 extra sets of wheels to cover all wire sizes. When changing wheels over you need to recalibrate the unit against the correct wire size.

Possible mounts

Standard foot mount
Prop shaft/Swivel Mount
Hook and Chain Mount

Model 4D Dynamometer

The Model 4 Dynamometer can measure up to **60** tons of cable tension



Sheave sizes

42mm, 44mm, 48mm, 50mm and 52mm

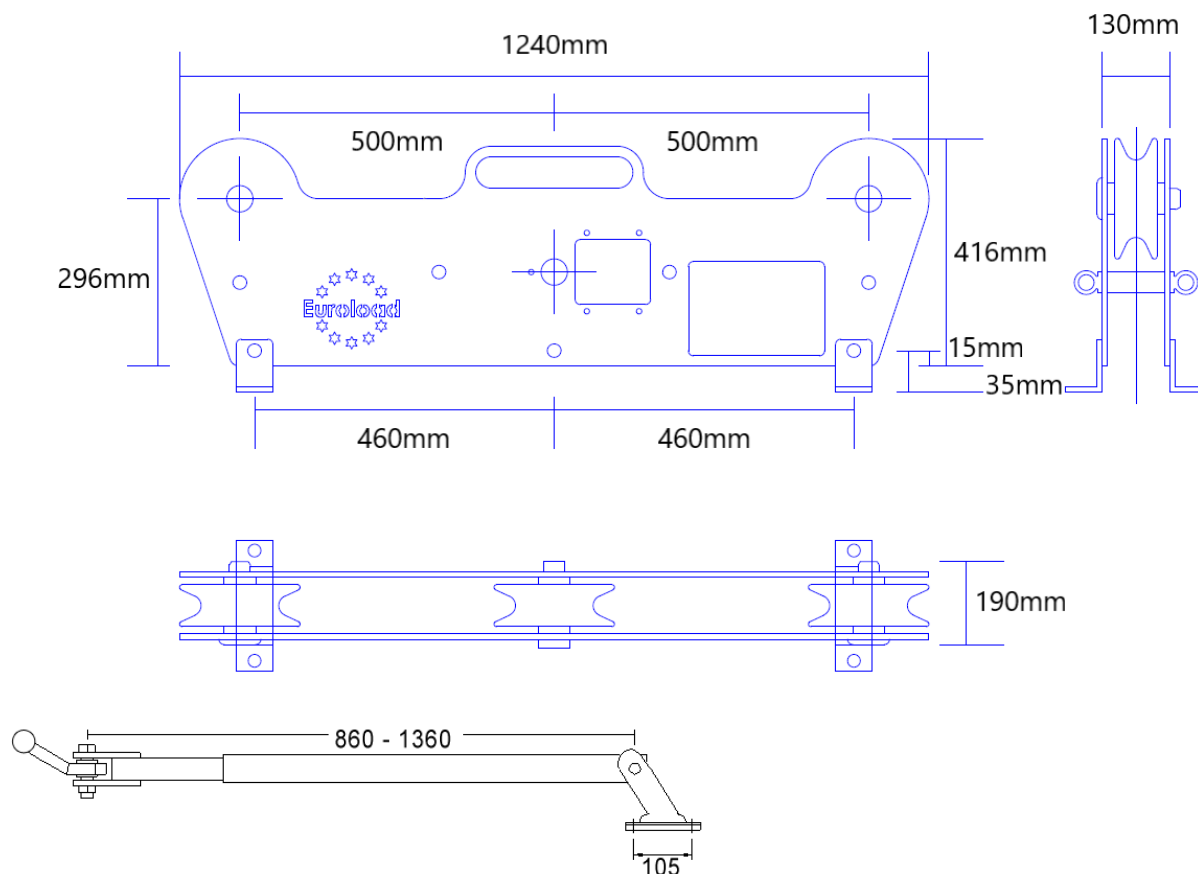
Note. You can buy 1 off RLM complete and 2 extra sets of wheels to cover all wire sizes. When changing wheels over you need to recalibrate the unit against the correct wire size.

Possible mounts

Standard foot mount
Prop shaft/Swivel Mount
Hook and Chain Mount

Model 5E Dynamometer

The Model 5E Dynamometer can measure up to **100** tons of cable tension



Sheave sizes

50mm, 52mm up to 100mm

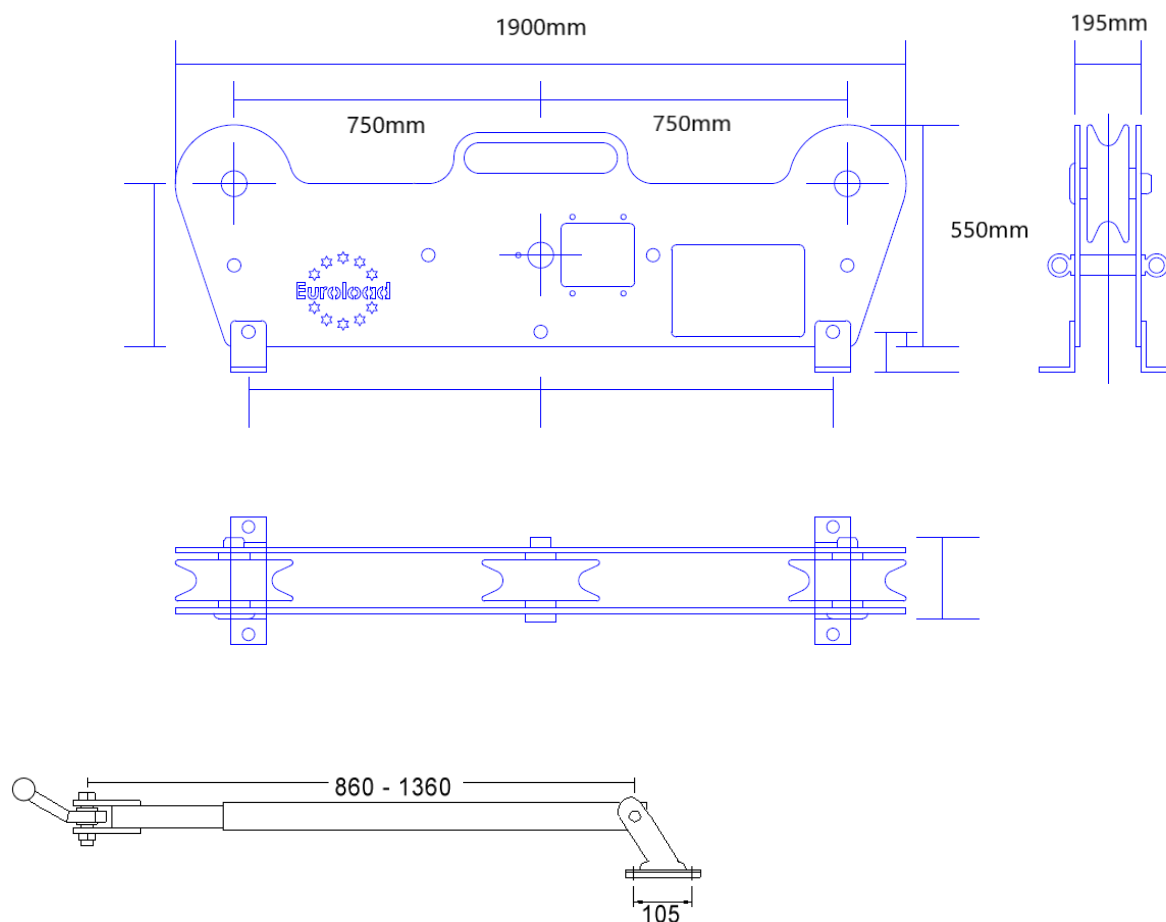
Note. You can buy 1 off RLM complete and 2 extra sets of wheels to cover all wire sizes. When changing wheels over you need to recalibrate the unit against the correct wire size.

Possible mounts

Standard foot mount
Prop shaft/Swivel Mount
Hook and Chain Mount

Model 6F Dynamometer

The Model 6F Dynamometer can measure up to **250** tons of cable tension



Sheave sizes

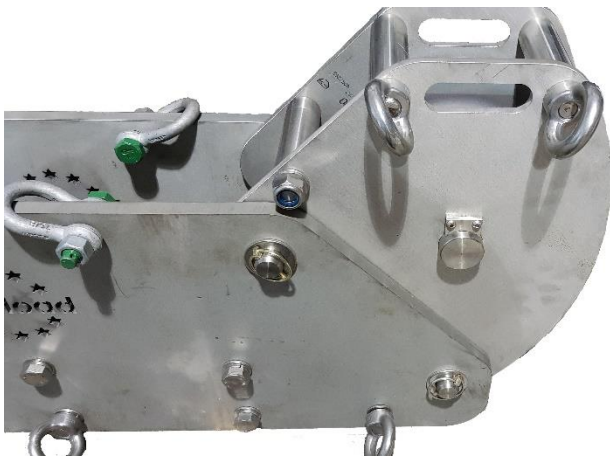
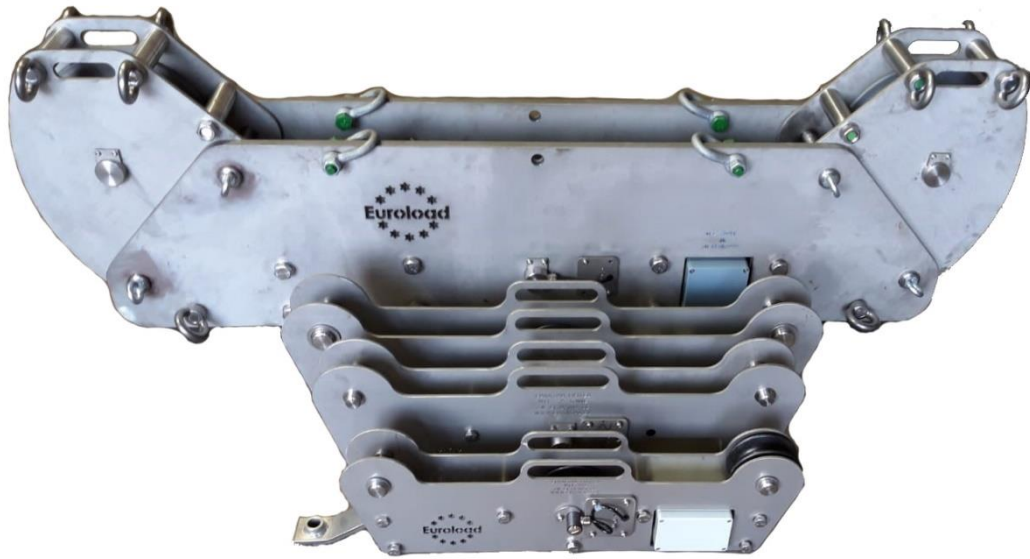
Up to 100mm

Note. You can buy 1 off RLM complete and 2 extra sets of wheels to cover all wire sizes. When changing wheels over you need to recalibrate the unit against the correct wire size.

Possible mounts

Standard foot mount
Prop shaft/Swivel Mount
Hook and Chain Mount

Model 6F 87mm Gallery



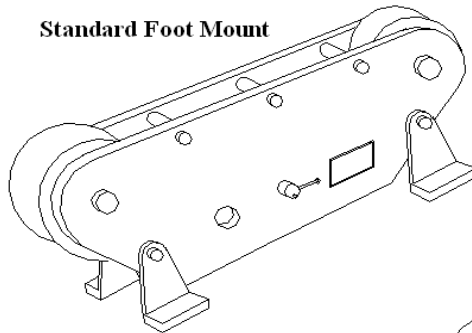
Multiple mounting points.
Fully stainless steel (steel coated sheaves).
No tools required to mount unit.
High spec bearings for minimal wire ware.

Carry Cases

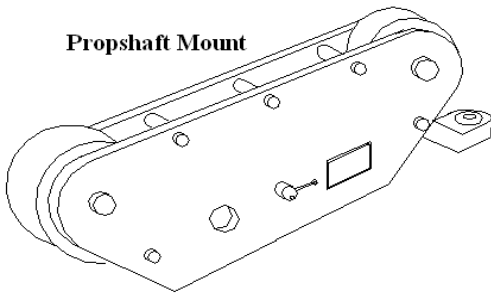
Euroload can supply purpose-built flight cases to house our running line monitor. The case holds the running line monitor with all possible mounts fitted (prop shaft supplied separate), handset, batteries, laptop, USB telemetry receiver.



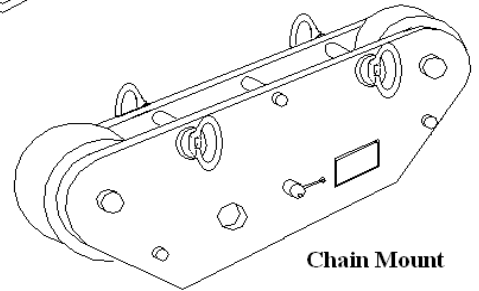
Standard Foot Mount



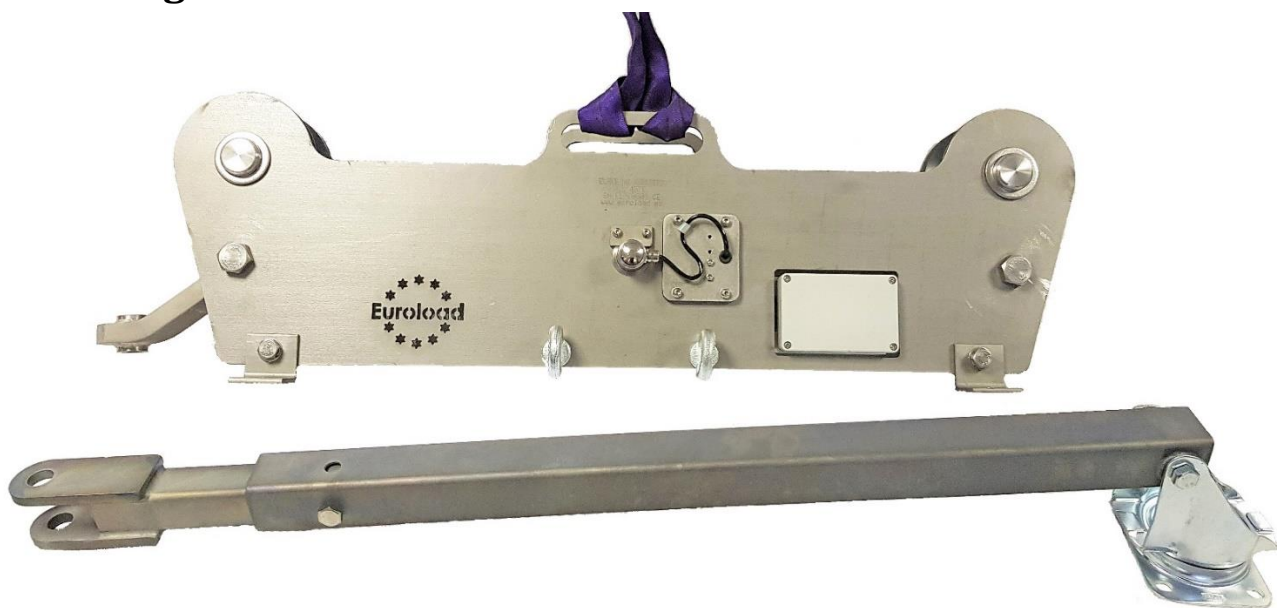
Propshaft Mount



Chain Mount



Mounting Information





Contact Information

The information displayed in this data sheet has been written to the highest standard. While we have tried our best to make sure the information is as descriptive as possible. There may be information that is omitted or missing. If this is the case, then feel free to contact us regarding any information on this product.

United Kingdom

Euroload Limited

Unit 9, Airside Business Park, Dyce drive,
Kirkhill Industrial Estate, Dyce,
Aberdeen, Scotland, AB21 0GT

Tel: +44 1224 774115 e mail: Info@euroload.eu Web site: www.euroload.eu

Visit our web site to find a distributor in your region.

